



“How can we approach the piedmont with our minds and imaginations? How can we tell its stories in the same way that many of the great writers have described the mythic Southern coast and mountains? These are some of the questions we will pursue in our emerging environmental studies center.”

—John Lane, Associate Professor of English, Wofford College

“These new facilities at Glendale will be a place where I can get students out in the field—sometimes to get wet and dirty—as we investigate local environmental issues. And my excitement is shared by professors and students from all across campus. This beautiful new facility and green space will transform the way that we interact with our Piedmont landscape and apply what we learn to global issues.”

—Dr. Ellen Goldey, Professor of Biology, Wofford College

“I will remember the verdant and stately Wofford campus and especially, Glendale...It's like the best instructional movie of South Carolina history, geology, vegetation, limnology, engineering, architecture, and dozens of other subspecialties. What you are doing there is a potential showpiece in education.”

—Jordan Fisher Smith, author of *Nature Noir*, after visiting Glendale



Glendale Building Renovation

Glendale, a small community located 15 minutes from Wofford's campus along Lawson's Fork Creek in eastern Spartanburg County, is the site of the new environmental studies program at Wofford College. The Glendale Office Building, the only surviving structure of what was once a thriving cotton mill complex, has been donated to Wofford to house the new program—the first permanent educational facility not on Wofford's historic campus. The anticipated cost of renovations to the structure, originally built in 1900, is \$1,000,000.

An Interdisciplinary Program

The environmental studies program will broaden the learning opportunities for students from a variety of disciplines, making it a natural extension of the liberal arts education. Possibilities include scientific explorations of water quality in Lawson's Fork Creek, creative writing projects about nature, physical education courses on kayaking, and in-depth historical study of the South's textile heritage. Collaborations with other environmental organizations, as well as local school districts, are also planned.

An Environmental Field Station for Student Learning

The Glendale Building will contain two laboratory spaces for research ranging from toxicology studies in biology and chemistry courses to natural history surveys of flora and fauna. From this vantage point, students will have on-the-ground, real-time interactions with the natural and cultural issues they read about in the classroom.

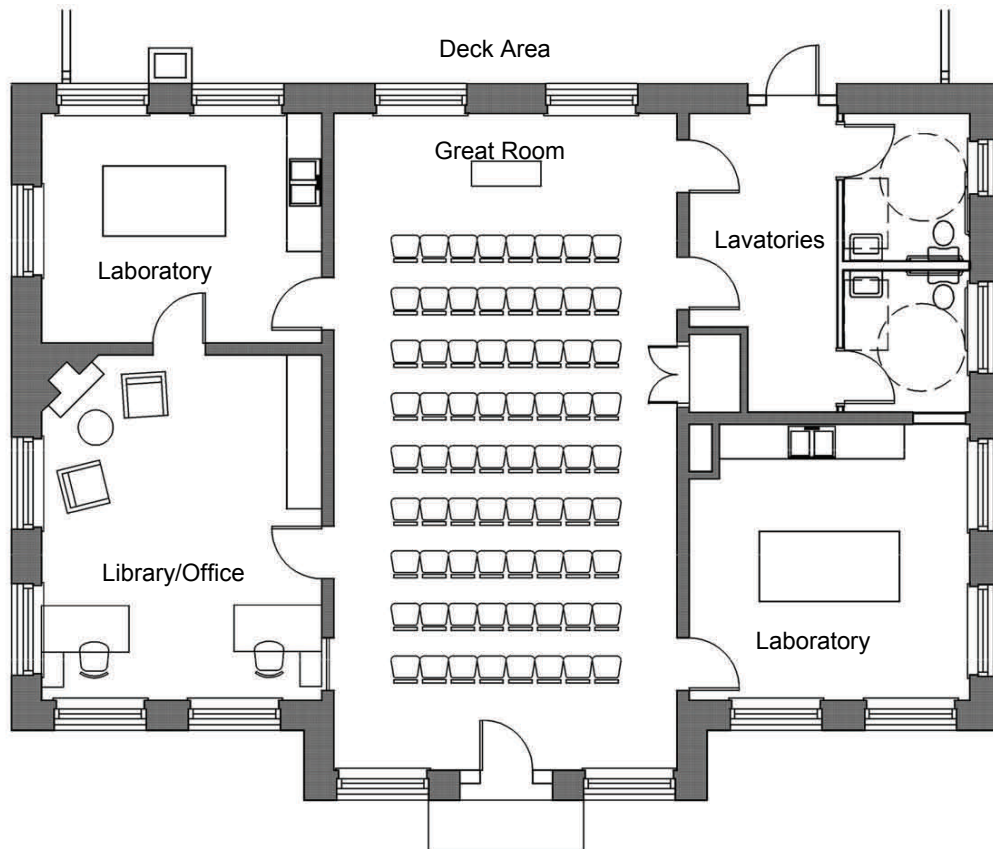
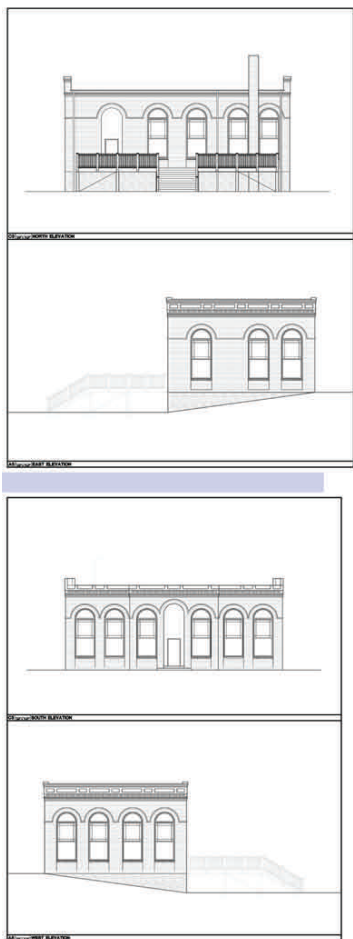
A central great room will be used as a gathering place for students, faculty and community members to come together to learn about topics such as environmental writing, sustainable living and workshops in the history, geography and culture of the Glendale community from Wofford faculty and experts from around the world. A library and office space will house program materials and serve as a base of operations for managing the use of the Glendale Building. A large deck on the back of the building will be used for classes, seminars, and other activities.

A LEED Certified Building Renovation

The proposed remodel of the Glendale Building will achieve the highest level of the Leadership in Energy and Environmental Design (LEED) Green Building Rating System. A platinum rating will be sought in areas of water efficiency, energy and atmosphere, materials and resources, indoor environmental quality and innovation and design process.



Glendale Building Floor Plan



WOFFORD COLLEGE ENVIRONMENTAL STUDIES

Available Naming Opportunities

Entire Building — \$1,000,000

Library/Office — \$250,000 gift

Deck — \$25,000 gift

Great Room — \$500,000 gift

Laboratory (2) — \$50,000 gift

For more information on making a gift, please contact the Office of Development at 864-597-4200.

