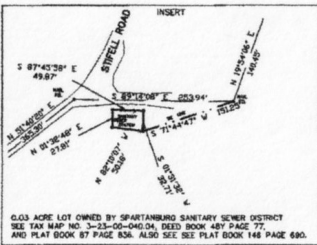
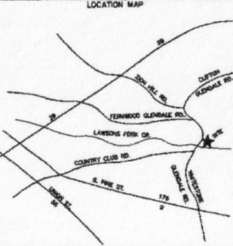


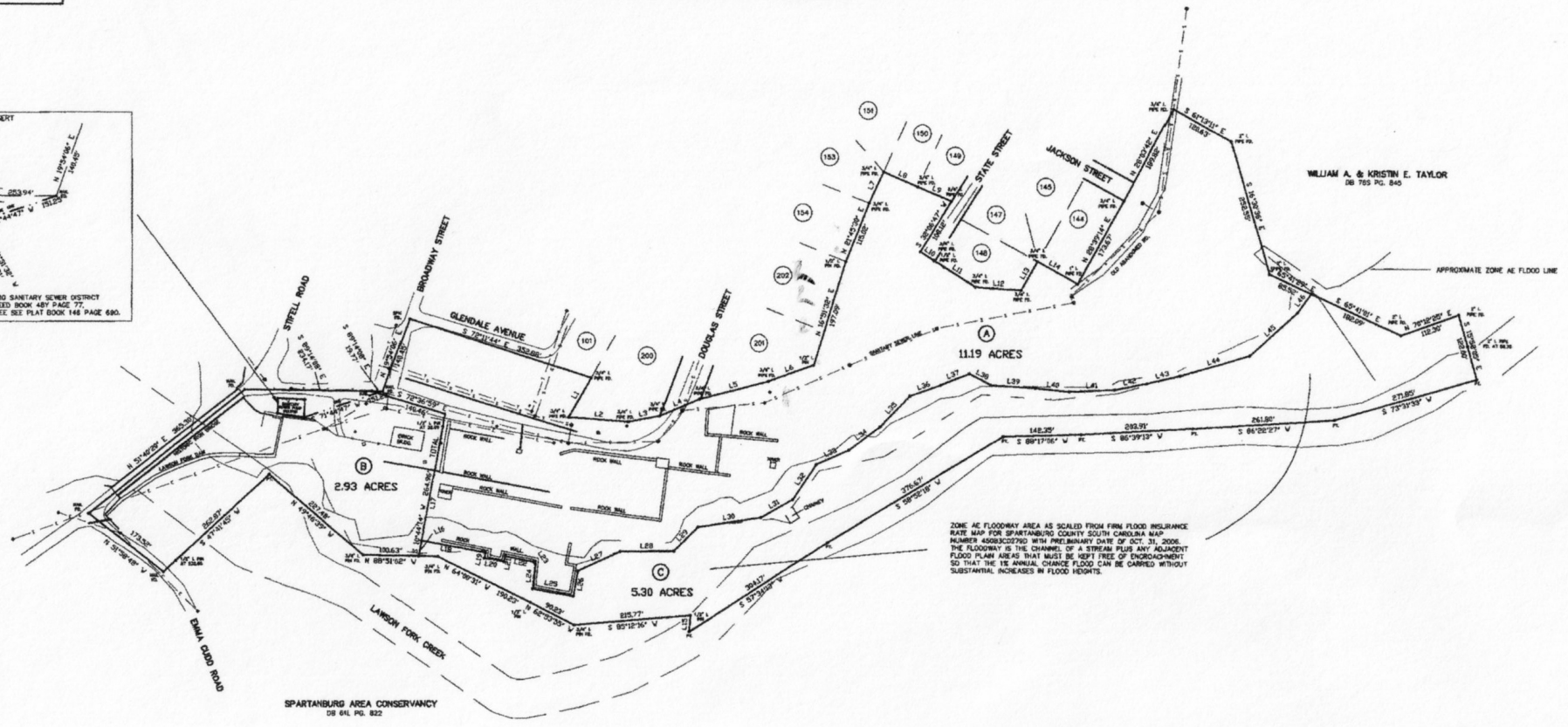
Plat 163 Revised 3-18-2008



PLT 2008-21285
Recorded 1 Page on 5/1/2008 at 3:09 PM
Recording Fee: \$25.00 Documentary Stamp: \$0.00
Office of Register of Deeds, Spartanburg, S.C.
Stephen Ford, Recorder



0.03 ACRE LOT OWNED BY SPARTANBURG SANITARY SEWER DISTRICT
SEE TAX MAP NO. 3-23-00-041.04, DEED BOOK 487 PAGE 77,
AND PLAT BOOK 87 PAGE 83A. ALSO SEE PLAT BOOK 148 PAGE 480.



ZONE A FLOODWAY AREA AS SCALED FROM FIRM FLOOD INSURANCE
RATE MAP FOR SPARTANBURG COUNTY SOUTH CAROLINA MAP
NUMBER 4508302070 WITH PRELIMINARY DATE OF OCT. 31, 2006.
THE FLOODWAY IS THE CHANNEL OF A STREAM PLUS ANY ADJACENT
FLOOD PLAIN AREAS THAT MUST BE KEPT FREE OF ENCROACHMENT
SO THAT THE 1% ANNUAL CHANCE FLOOD CAN BE CARRIED WITHOUT
SUBSTANTIAL INCREASES IN FLOOD HEIGHTS.

LINE	BEARING	DISTANCE	LINE	BEARING	DISTANCE
L1	S 87°42'38" E	49.87	L44	S 84°02'27" W	64.80
L2	S 85°44'34" W	19.81	L45	S 79°22'25" E	76.94
L3	N 79°44'27" E	95.87	L46	N 80°54'25" E	58.47
L4	N 66°34'41" E	79.31	L47	N 70°52'55" E	65.37
L5	N 29°22'24" E	130.24	L48	N 89°32'25" E	99.27
L6	N 70°52'55" E	85.37	L49	N 81°42'03" E	118.77
L7	N 84°23'43" E	62.95	L50	N 81°42'03" E	118.77
L8	S 84°23'43" W	62.95	L51	N 81°42'03" E	118.77
L9	S 84°23'43" W	62.95	L52	N 81°42'03" E	118.77
L10	S 84°23'43" W	62.95	L53	N 81°42'03" E	118.77
L11	S 84°23'43" W	62.95	L54	N 81°42'03" E	118.77
L12	S 84°23'43" W	62.95	L55	N 81°42'03" E	118.77
L13	S 84°23'43" W	62.95	L56	N 81°42'03" E	118.77
L14	S 84°23'43" W	62.95	L57	N 81°42'03" E	118.77
L15	S 84°23'43" W	62.95	L58	N 81°42'03" E	118.77
L16	N 81°42'03" E	118.77	L59	N 81°42'03" E	118.77
L17	N 81°42'03" E	118.77	L60	N 81°42'03" E	118.77
L18	S 81°42'03" E	118.77	L61	N 81°42'03" E	118.77
L19	S 81°42'03" E	118.77	L62	N 81°42'03" E	118.77
L20	S 81°42'03" E	118.77	L63	N 81°42'03" E	118.77
L21	S 81°42'03" E	118.77	L64	N 81°42'03" E	118.77
L22	S 81°42'03" E	118.77	L65	N 81°42'03" E	118.77
L23	S 81°42'03" E	118.77	L66	N 81°42'03" E	118.77
L24	S 81°42'03" E	118.77	L67	N 81°42'03" E	118.77
L25	S 81°42'03" E	118.77	L68	N 81°42'03" E	118.77
L26	N 81°42'03" E	118.77	L69	N 81°42'03" E	118.77
L27	N 81°42'03" E	118.77	L70	N 81°42'03" E	118.77
L28	S 81°42'03" E	118.77	L71	N 81°42'03" E	118.77
L29	S 81°42'03" E	118.77	L72	N 81°42'03" E	118.77
L30	S 81°42'03" E	118.77	L73	N 81°42'03" E	118.77
L31	S 81°42'03" E	118.77	L74	N 81°42'03" E	118.77
L32	S 81°42'03" E	118.77	L75	N 81°42'03" E	118.77
L33	S 81°42'03" E	118.77	L76	N 81°42'03" E	118.77
L34	S 81°42'03" E	118.77	L77	N 81°42'03" E	118.77
L35	S 81°42'03" E	118.77	L78	N 81°42'03" E	118.77
L36	N 81°42'03" E	118.77	L79	N 81°42'03" E	118.77
L37	N 81°42'03" E	118.77	L80	N 81°42'03" E	118.77
L38	S 81°42'03" E	118.77	L81	N 81°42'03" E	118.77
L39	S 81°42'03" E	118.77	L82	N 81°42'03" E	118.77
L40	S 81°42'03" E	118.77	L83	N 81°42'03" E	118.77
L41	S 81°42'03" E	118.77	L84	N 81°42'03" E	118.77
L42	N 81°42'03" E	118.77	L85	N 81°42'03" E	118.77
L43	S 81°42'03" E	118.77	L86	N 81°42'03" E	118.77
L44	S 81°42'03" E	118.77	L87	N 81°42'03" E	118.77
L45	S 81°42'03" E	118.77	L88	N 81°42'03" E	118.77
L46	S 81°42'03" E	118.77	L89	N 81°42'03" E	118.77
L47	S 81°42'03" E	118.77	L90	N 81°42'03" E	118.77
L48	S 81°42'03" E	118.77	L91	N 81°42'03" E	118.77
L49	S 81°42'03" E	118.77	L92	N 81°42'03" E	118.77
L50	S 81°42'03" E	118.77	L93	N 81°42'03" E	118.77
L51	S 81°42'03" E	118.77	L94	N 81°42'03" E	118.77
L52	S 81°42'03" E	118.77	L95	N 81°42'03" E	118.77
L53	S 81°42'03" E	118.77	L96	N 81°42'03" E	118.77
L54	S 81°42'03" E	118.77	L97	N 81°42'03" E	118.77
L55	S 81°42'03" E	118.77	L98	N 81°42'03" E	118.77
L56	S 81°42'03" E	118.77	L99	N 81°42'03" E	118.77
L57	S 81°42'03" E	118.77	L100	N 81°42'03" E	118.77

MAY 01 2008
John E. [Signature]

NOTES: AREA IS SUBJECT TO ALL RIGHTS OF WAY AND EASEMENTS OF RECORD OR NOT OF RECORD.
ALL UNDERGROUND UTILITIES ARE NOT SHOWN AND THEIR LOCATIONS ARE UNKNOWN TO ME.
I HEREBY STATE TO GLENDALE DEVELOPMENT CORP., WOFFORD COLLEGE & PALMETTO CONSERVATION FOUNDATION THAT TO THE BEST OF MY KNOWLEDGE, INFORMATION, AND BELIEF, THE SURVEY SHOWN HEREIN WAS MADE IN ACCORDANCE WITH THE REQUIREMENTS OF THE MINIMUM STANDARDS MANUAL FOR THE PRACTICE OF LAND SURVEYING IN SOUTH CAROLINA, AND MEETS OR EXCEEDS THE REQUIREMENTS FOR A CLASS 'A' SURVEY AS SPECIFIED THEREIN. ALSO THERE ARE NO VISIBLE ENCROACHMENTS OR PROJECTIONS OTHER THAN SHOWN.
1/2" I PINS LOCATED AT ALL CORNERS EXCEPT AS NOTED.

SURVEY FOR GLENDALE DEVELOPMENT CORP. WOFFORD COLLEGE & PALMETTO CONSERVATION FOUNDATION			
COUNTY	STATE	BLOCK MAP	
SPARTANBURG	SOUTH CAROLINA	3-23-00-040.00	
SCALE: 1 IN. = 100 FT.	100	50	0
DATE	FIELD	OFFICE	DEED BOOK
AUGUST 8, 2007	A. H.	J.E.M.	7 N. PG. 955
REVISED			PLAT BOOK
MARCH 18, 2008			146 PG. 690
MITCHELL SURVEYING 801 N. MAIN STREET, P. O. BOX 1004, WOODRUFF, S. C. 29388 PROFESSIONAL LAND SURVEYORS PHONE (864) 476-6217			
			P.L.S. 40339
			JOB NO. 07QMP623PR1